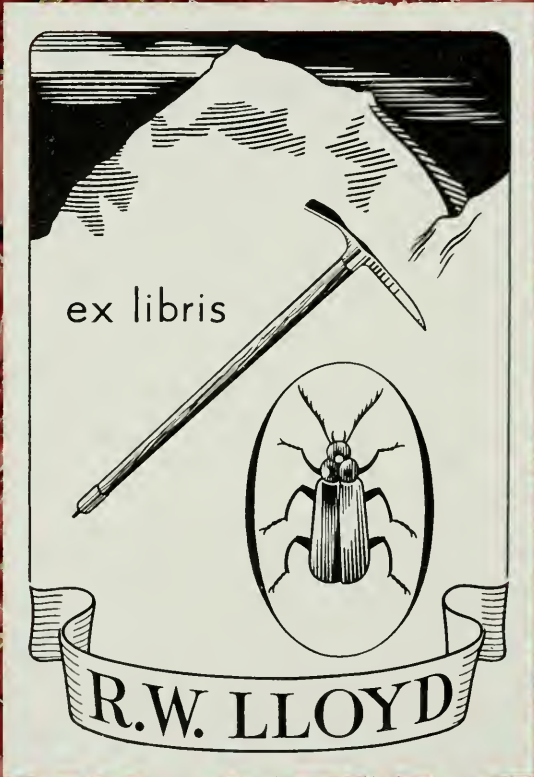
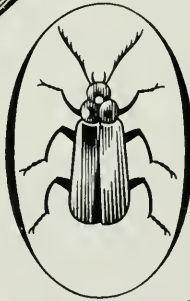


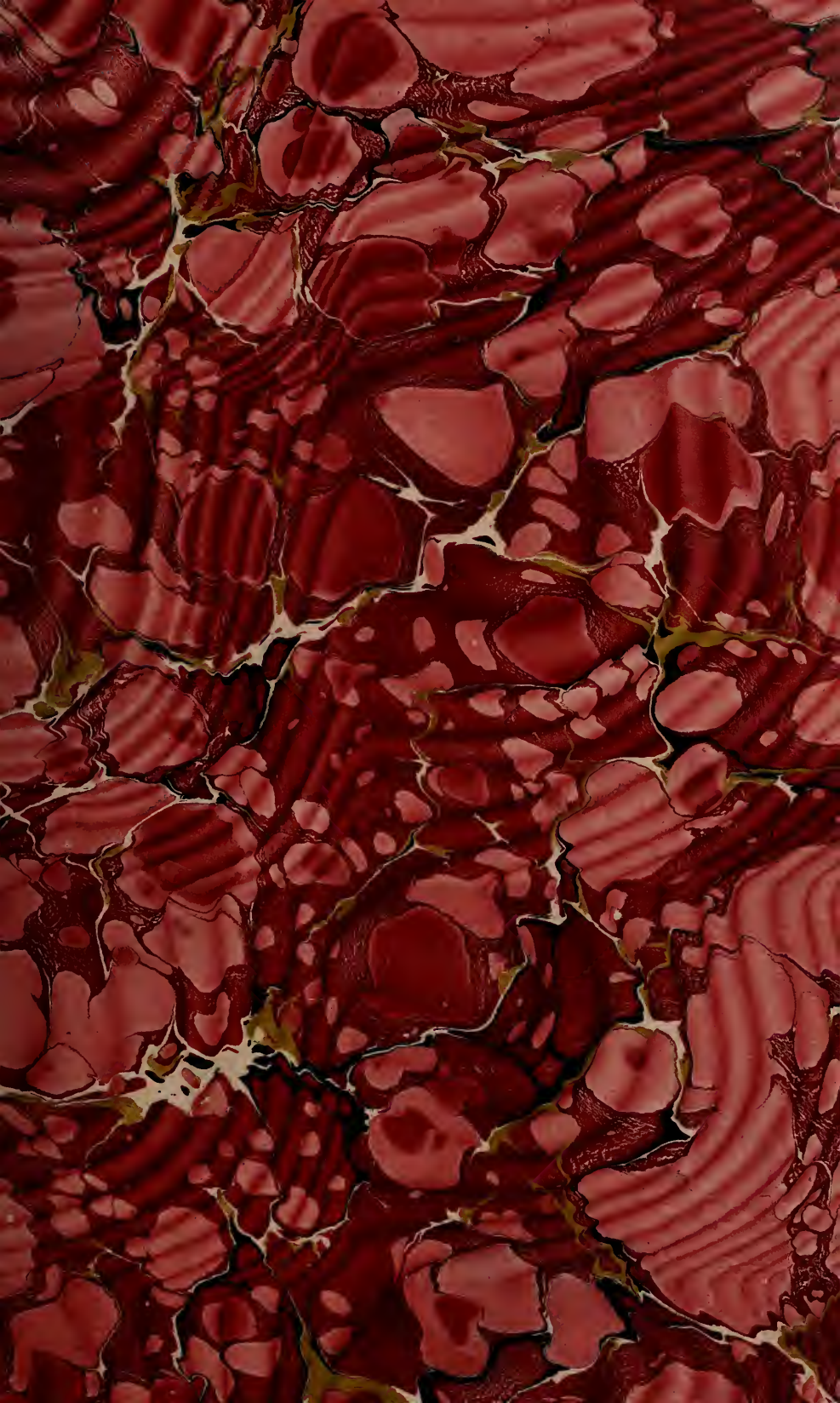
1/4/93  
to  
4/29/93



ex libris



R.W. LLOYD









THE COLLECTION OF  
**WATER-COLOUR DRAWINGS**

OF

**PETER ALLEN, ESQ.,**

DECEASED;

AND THE COLLECTION OF

**T. E. CRAWHALL, ESQ., DECEASED.**





CATALOGUE

OF

The Choice Collection of

WATER-COLOUR DRAWINGS

FORMED BY

PETER ALLEN, ESQ.,

DECEASED,

Late of Overbrook, Kersal, near Manchester

(by Order of the Executors);

CHOICE WATER-COLOUR DRAWINGS,

THE PROPERTY OF

T. E. CRAWHALL, ESQ.,

Deceased, late of Condercum, Newcastle-on-Tyne

(by Order of the Executor):

WHICH

Will be Sold by Auction, by

MESSRS. CHRISTIE, MANSON & WOODS,

AT THEIR GREAT ROOMS,

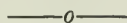
8 KING STREET, ST. JAMES'S SQUARE, LV 51457

On SATURDAY, MARCH 11, 1893,

AT ONE O'CLOCK PRECISELY.

—o—o—o—  
May be viewed Three Days preceding, and Catalogues had,  
at Messrs. CHRISTIE, MANSON & WOODS' Offices, 8 King Street,  
St. James's Square, S.W.

## CONDITIONS OF SALE.



- I. THE highest bidder to be the Buyer; and if any dispute arise between two or more Bidders, the Lot so in dispute shall be immediately put up again and re-sold.
- II. No person to advance less than 1s.; above Five Pounds, 5s.; and so on in proportion.
- III. In the case of Lots upon which there is a reserve, the Auctioneer shall have the right to bid on behalf of the Seller.
- IV. The Purchasers to give in their Names and Places of Abode, and to pay down 5s. in the pound, or more, in part of payment, or the whole of the Purchase-money, *if required*; in default of which, the Lot or Lots so purchased to be immediately put up again and re-sold.
- V. The Lots to be taken away and paid for, whether genuine and authentic or not, with all faults and errors of description, at the Buyer's expense and risk, within Two days from the Sale; Messrs. CHRISTIE, MANSON and WOODS not being responsible for the correct description, genuineness, or authenticity of, or any fault or defect in, any Lot, and making no warranty whatever.
- VI. To prevent inaccuracy in delivery, and inconvenience in the settlement of the Purchases, no Lot can on any account be removed during the time of Sale; and the remainder of the Purchase-Money must absolutely be paid on the delivery
- VII. Upon failure of complying with the above Conditions, the Money deposited in part of payment shall be forfeited; all Lots un-cleared within the time aforesaid shall be re-sold by public or private Sale, and the deficiency (if any) attending such re-sale shall be made good by the Defaulter at this Sale.

# CATALOGUE.

On SATURDAY, MARCH 11, 1893,

AT ONE O'CLOCK PRECISELY.

W. DERBY.

5 1 MISS BOWLES, after Sir J. Reynolds

12 x 10

*Shepherd*

J. C. IBBETSON.

5 1/2 { 2 A ROAD SCENE, with cattle in a pond

6 x 8

*Agnew*

J. C. IBBETSON.

3 AN OLD WINDMILL

7 x 7

C. MULNER, 1794.

4 1/2 4 A VIEW NEAR ROME, looking towards Tivoli

20 x 20

*Gribble*

F. ZUCCARELLI, R.A.

4 5 THE FORUM AT ROME 14 x 16

14 in. by 18 in.

J. NASH.

- 6 1/2  
6 MONTACUTE HOUSE, Somerset  
20 in. by 13 in.

SIR A. W. CALLCOTT, R.A.

- 20  
7 A RIVER SCENE, with cattle in the water  
21 in. by 35 in.

G. CATTERMOLLE.

- 11  
8 READING THE SCRIPTURES IN THE BARON'S HALL  
7 in. by 15 1/2 in.

Agnew

G. CATTERMOLLE.

- 6  
9 DON QUIXOTE IN HIS STUDY  
11 1/2 in. by 15 in.

Ashton

G. CATTERMOLLE.

- 13  
10 DISTRIBUTING ALMS  
7 1/2 in. by 15 in.

McLean

G. CATTERMOLLE.

- 24  
11 THE CHALLENGE  
12 in. by 17 in.

Polak J.

*Exhibited at the Jubilee Exhibition, Manchester, 1887*

W. COLLINS, R.A.

- 75-  
12 FISHERMAN'S BAY, Isle of Wight  
20 in. by 26 in.

Agnew

*Exhibited at Burlington House, 1873*

*Exhibited at the Jubilee Exhibition, Manchester, 1887*

## J. CONSTABLE, R.A.

- 11 13 A VIEW IN SUFFOLK  
5 in. by 7 in.

*Leggatt*

## J. S. COTMAN.

- 14 THE VIA MALA  
16 in. by 12 in.  
*Exhibited at the Jubilee Exhibition, Manchester, 1887*

## J. S. COTMAN.

- 15 A VIEW IN ~~STRA~~ *the Bay of Naples*  
17 in. by 26 in.

*Rowe*

## J. S. COTMAN.

- 16 ENTRANCE TO THE TAGUS  
9 in. by 15 in.  
*Exhibited at the Jubilee Exhibition, Manchester, 1887*

*Agnew*

## D. COX.

- 17 TORRINGTON SQUARE, London  
4½ in. by 6½ in.

*do*

## D. COX.

- 18 A RUINED ABBEY—a sketch  
18 in. by 28 in.

## D. COX.

- 19 A RIVER SCENE  
8 in. by 11 in.

*Sir. C. Robertson*

## D. COX.

- 20 A MOORLAND SCENE  
8½ in. by 11 in.

*Agnew*

D. COX.

- 11 21 A LANDSCAPE IN WALES, with rocky foreground  
7½ in. by 11 in.

D. COX.

- 90 22 CROSSING LANCASTER SANDS  
9 in. by 14 in.

*Agricrew*

D. COX.

- 31 23 BOLTON ABBEY  
10 in. by 14 in.

*do*

D. COX.

- 40 24 LANCASTER  
11 in. by 18 in.

D. COX.

- 50 25 KENILWORTH  
13½ in. by 18 in.

D. COX.

- 22 26 NEAR KNARESBOROUGH  
14 in. by 30 in.

*Agricrew*

D. COX.

- 48 27 ASKING THE WAY  
8 in. by 13 in.  
*Exhibited at the Jubilee Exhibition, Manchester, 1887*

*do*

D. COX.

- 26 28 A WELSH LANDSCAPE  
19 in. by 27 in.

*Gooden*

D. COX, 1854.

- 25- 29 BESOM GATHERERS *Agnew*  
 14 in. by 21 in.  
*Exhibited at the Jubilee Exhibition, Manchester, 1887*
- D. COX.
- 30 DRIVING HOME THE FLOCK *do*  
 20 in. by 28½ in.
- D. COX.
- 31 ON THE MEDWAY *do*  
 19 in. by 29 in.
- D. COX.
- 32 RIVAULX ABBEY *M<sup>o</sup>Lean*  
 21 in. by 28½ in.
- D. COX.
- 33 PEAT GATHERERS *Agnew*  
 30 in. by 25 in.
- D. COX.
- 34 BOLTON PARK, Yorkshire *do*  
 19 in. by 24 in.
- D. COX.
- 35 COWS IN A RIVER *do*  
 8 in. by 12 in.  
*Exhibited at the Jubilee Exhibition, Manchester, 1887*  
*Exhibited at the Cox Exhibition, Birmingham, 1890*

D. COX, 1853.

## 170 36 STOKESAY, NEAR LUDLOW

11 in. by 15 in.

*Exhibited at the Liverpool Art Club, 1875**Engraved in Solly's 'Life of Cox.'**Agnew*

D. COX.

## 205- 37 TAKING THE LEFT ROAD

16 in. by 23 in.

*Exhibited at the Jubilee Exhibition, Manchester, 1887**Exhibited at the Cox Exhibition, Birmingham, 1890**do*

D. COX.

## 170 38 LUGG MEADOWS, NEAR HEREFORD

17 in. by 27 in.

*Exhibited at the Liverpool Art Club, 1875**Exhibited at the Cox Exhibition, Birmingham, 1890**Engraved in Solly's 'Life of Cox.'**do*

D. COX.

## 315- 39 HARDWICK HALL

18 in. by 24 in.

*Exhibited at the Jubilee Exhibition, Manchester, 1887**Exhibited at the Cox Exhibition, Birmingham, 1890.**do*

D. COX.

## 55- 40 NEAR CARNARVON

18 in. by 24 in.

*Exhibited at the Jubilee Exhibition, Manchester, 1887**do*

J. CROME.

## 20 41 A NORFOLK RIVER, with boats

21½ in. by 17 in.

*Gooden*



P. DE WINT.

4 42 A SKETCH

9 in. by 24 in.

P. DE. WINT.

6 43 A COAST SCENE

11 in. by 17 in.

*Agnew*

P. DE WINT.

8 44 KENILWORTH

13 in. by 19½ in.

*do*

P. DE WINT.

0 45 A LINCOLNSHIRE FARM

13 in. by 22 in.

*do*

P. DE WINT.

2 46 OLD PUTNEY BRIDGE

12½ in. by 18 in.

P. DE WINT.

5- 47 CROSSING THE FORD

8½ in. by 12 in.

P. DE WINT.

8 48 CHIRK VIADUCT

13½ in. by 28 in.

*Agnew*

P. DE WINT.

11 49 THE GLEANER

12 in. by 9½ in.

Rowe

P. DE WINT.

135- 50 WET MEADOWS

10 in. by 17 in.

*Exhibited at the Jubilee Exhibition, Manchester, 1887*

Agnew

P. DE WINT.

265- 51 HAY HARVEST

14 in. by 21 in.

*Exhibited at the Jubilee Exhibition, Manchester, 1887*

do

P. DE WINT.

270 52 CORN HARVEST

16 in. by 21 in.

*Exhibited at the Jubilee Exhibition, Manchester, 1887*

do

P. DE WINT.

75- 53 STACKING HAY

13 in. by 22 in.

*Exhibited at the Jubilee Exhibition, Manchester, 1887*

do

P. DE WINT.

110 54 SALTWOOD CASTLE, Kent

17½ in. by 33 in.

*Exhibited at the Jubilee Exhibition, Manchester, 1887*

do

E. DUNCAN.

15- 55 GUY'S CLIFF, near Warwick

16 in. by 24 in.

do

## COPLEY FIELDING,

48-56 DARTMOUTH

7 in. by 11 in.

Agnew

## COPLEY FIELDING.

48-57 LOCH LEVEN CASTLE

8 in. by 12 in.

do

## COPLEY FIELDING.

58 GLEN FALLOCH

20 in. by 29 in.

*Exhibited at the Jubilee Exhibition, Manchester, 1887*

do

## COPLEY FIELDING.

59 FAIRLIGHT DOWNS, looking toward Dungeness

18 in. by 24½ in.

*Exhibited at the Jubilee Exhibition, Manchester, 1887*

do

## COPLEY FIELDING, 1841.

60 OFF THE EAST COAST

16½ in. by 24 in.

*Exhibited at the Jubilee Exhibition, Manchester, 1887*

do

## E. FRÈRE.

61 BREAKFAST TIME

12 in. by 14½ in.

Leggatt

## E. FRÈRE.

62 JUST A LITTLE DROP

15½ in. by 11 in.

do

## W. HUNT.

110 63 A WARM BERTH *Agnew*

11 in. by 7½ in.

*Exhibited at the Jubilee Exhibition, Manchester, 1887*

## E. BURNE JONES, A.R.A.

28 64 THE FIRST MARRIAGE *do*

12 in. by 8 in.

## J. F. LEWIS, R.A.

155- 65 STREET IN SEVILLE, with the tower of the Giralda *Gooden*

33 in. by 26 in.

*From the Knowles' Collection**Exhibited at the Jubilee Exhibition, Manchester, 1887*

## W. MULLER.

16 66 LUXOR, Egypt *McLean*

14 in. by 17 in.

## W. MULLER.

87 67 COTTAGE IN A WOOD *Agnew*

14 in. by 20 in.

## W. MULLER.

96- 68 EEL-TRAPS ON THE THAMES *do*

14 in. by 21 in.

*Exhibited at the Jubilee Exhibition, Manchester, 1887**Sketch for the large picture*

## W. MULLER.

69 A WELSH RIVER

14½ in. by 22 in.

*Exhibited at the Jubilee Exhibition, Manchester, 1887**Agnew*

## W. MULLER, 1834.

70 THE ACROPOLIS AT ATHENS

12 in. by 19 in.

*From the Collection of Sir F. Graham Moon, Bart., 1872**From the Knowles' Collection, 1880**Exhibited at the Jubilee Exhibition, Manchester, 1887**do*

## F. NASH.

71 TINTERN ABBEY, on the Wye

21 in. by 30 in.

## W. J. NASH.

72 ETON FROM THE MEADOWS

22 in. by 32 in.

*Exhibited at the Jubilee Exhibition, Manchester, 1887*

## A. P. NEWTON.

73 PORTICO OF THE CECROPIUM, Athens

14 in. by 20 in.

## S. OWEN.

74 OFF SHEERNESS

6 in. by 8½ in.

*Shepherd*

P. F. POOLE, R.A.

5 1/2 75 A MOUNTAIN GIRL

16 1/2 in. by 12 1/2 in.

S. PROUT.

180 76 ALBERT DURER'S WELL, at Nuremberg

26 in. by 19 in.

*Exhibited at the Jubilee Exhibition, Manchester, 1887* Agnew

C. STANFIELD, R.A.

/ 77 THE BATHERS

187/2

Leggatt

C. STANFIELD, R.A.

27 78 A HIGHLAND RIVER

7 in. by 10 1/2 in.

Agnew

C. STANFIELD, R.A.

34 79 FÉCAMP, Normandy

8 1/2 in. by 12 in.

C. STANFIELD, R.A., 1828.

64 80 CASTLE OF CHILLON

8 in. by 13 1/2 in.

*Exhibited at the Jubilee Exhibition, Manchester, 1887* Agnew

F. TAYLER.

22 81 THE FLOCKS WILL LEAVE THE MOUNTAINS

11 in. by 15 in.

F. TAYLER.

22 82 PRINCE CHARLIE AND FLORA MACDONALD

9 in. by 15 in.

Legg

C. TOWNE.

- 23 83 LANDING FISH AT DOVER  
20 in. by 32 in.

*Watson*

J. M. W. TURNER, R.A.

- 20 84 GENEVA  
5 in. by 7 in.

*Moore*

J. M. W. TURNER, R.A.

- 22 85 GENOA  
5½ in. by 7 in.

J. VARLEY.

- 3½ 86 A LANDSCAPE, with river  
11 in. by 14 in.

*Adams*

J. VARLEY.

- 5½ 87 A RIVER SCENE  
11 in. by 17 in.

*do*

G. BARRET.

- 1 88 LONDON FROM HIGHGATE HILL  
8½ in. by 12 in.

S. PROUT.

- 8 89 A TROOP-SHIP, leaving Plymouth  
13 in. by 20 in.  
*Selected by J. M. W. Turner, R.A., for W. Fawkes, Esq.*



The following are the *Property of A GENTLEMAN.*

WATER-COLOUR DRAWINGS.

R. P. BONINGTON.

32 90 VENICE 9 x 12

C. CHAPLIN.

22 91 THE MORNING TOILET 14 x 6

T. COLLIER.

29 92 A LANDSCAPE 10 x 15-

T. CRESWICK, R.A.

4 1/2 93 A RIVER SCENE

5 x 6

Smith (?)

D. COX.

12 94 A LANDSCAPE

9 x 11

D. COX.

15- 95 A HEATH SCENE

9 x 11

D. COX.

13 96 A LANDSCAPE

8 x 10

P. DE WINT.

9 97 A LANDSCAPE, with cattle 10 x 11



## P. DE WINT.

98 A RIVER SCENE *8x11*

## DESCHAMPS.

99 A LANDSCAPE *8x10* *M<sup>c</sup>Lean*

## COPLEY FIELDING.

100 A SCOTCH LAKE SCENE *10x14* *do*

## H. GASTINEAU.

101 CARNARVON CASTLE *8x10* *Adamsou*

## A. W. HUNT.

102 NEAR LIVERPOOL *8x10* *do*

## W. HUNT.

103 A DEAD BIRDS *9x12*

## W. L. LEITCH.

104 A LANDSCAPE *9x11* *M<sup>c</sup>Lean*

105 THE BERKS OF INVERARY *14x22*

106 A LANDSCAPE, with flock of sheep *9x12* *Larkin*

107 A SCOTCH LANDSCAPE *8x10* *Rowe*

108 A LANDSCAPE, with cattle *7x10* *Legge*

## J. MOGFORD.

109 WITHERSTOCK SCAR, near Grange  
*2x22*

## SUTTON PALMER.

4 1/2 110 A LANDSCAPE 10 x 12 Larkin

## T. M. RICHARDSON.

6 1/2 111 URQUHART CASTLE 9 x 12 M Lean

## H. B. WILLIS.

15- 112 A SCOTCH LANDSCAPE, with cattle  
5 x 11  
Juturn

6 1/2 112<sup>a</sup> A Landscape 12 x 14

---

## ANOTHER PROPERTY.

## COPLEY FIELDING, 1841.

100 113 A LANDSCAPE, with cattle on a road, and distant hills M Lean  
12 x 18

## S. PROUT.

29 114 OLD BUILDINGS ON A RIVER, Germany do  
From the Collection of Frederick Lehmann, Esq., deceased  
14 x 8

## F. HEILBUTH.

5- 115 A CARDINAL AND SERVANTS do  
8 x 10 do sale

---

The following are  
the Property of T. E. CRAWHALL, Esq., deceased,  
late of Condercum, Newcastle-on-Tyne.

Sold by Order of his Executor.

WATER-COLOUR DRAWINGS.

15. - 116 A SKATING SCENE—pen and ink  
10 x 12  
Leggatt
- CATTERMOLE.  
117 FAUST 8 x 10  
W. J. BLACKLOCK.  
118 A VIEW IN WALES 9 x 12  
Blackall
- D. COX.  
119 CRYPT OF KIRKSTALL ABBEY 7 x 10  
Sir C. Robertson
- J. LINNELL, SEN.  
120 A ROAD SCENE, with figures and sheep 5 x 7  
Agnew
- T. COLLIER.  
121 A PARK SCENE, with deer 8 x 10
- D. COX.  
122 SALMON TRAP 7 x 9

## COPLEY FIELDING.

31 123 A VIEW ON THE SOUTH COAST, with boats and figures hauling  
wreckage *8x10* *Polak Jr*

J. MARTIN.

6 1/2 { 124 VENICE: Effect of night and moonlight

*6x8*

F. TAYLER.

125 HOUNDS } *Adams*

W. J. BLACKLOCK.

3 { 126 A FOREST SCENE, with Spring

D. COX.

127 A FOREST SCENE—*sketch*

D. COX.

3 1/2 128 A RIVER SCENE, with barge and cows

*6x8*

A. W. HUNT.

41 129 DURHAM *9x12* *Vokins*

D. COX.

16 130 A WELSH COTTAGE KITCHEN *do*

*8x10*

G. CATTERMOLLE.

10 131 INTERIOR OF A SCRIPTORIUM

*9x12*

W. HUNT, 1827.

132 MUSCAT GRAPES *8x10*

W. HUNT.

133 BLACK GRAPES AND PEAR (*oval*)  
*8x10**Kobius*

W. HUNT, 1831.

134 BIRD'S NEST, and Kalmia Lattifolia  
*7x10**Agnew*

G. CATTERMOLLE.

135 INTERIOR OF A BARONIAL HALL, with figures  
*8x11*

D. COX.

136 A RIVER SCENE, with old bridge, figures, and cows  
*7x9**Adams*

COPLEY FIELDING.

137 A SCENE IN THE LOWLANDS, with farm houses and implements  
*8x12**Simpson*

D. COX.

138 A COAST SCENE, with boats and figures  
*8x10*

S. PROUT.

139 THE FORUM AT ROME *18x9**de Lean*

D. ROBERTS, R.A.

140 AN EASTERN VIEW, with temple and figures  
*8x11**do*

## E. HAYES, R.H.A.

6 1/2

141 THE MOUTH OF A RIVER, with fishing boat

6 x 10

Agnew

## H. BRIGHT.

6

142 BARGES ON THE BROADS

9 x 12

## D. COX.

29

143 ROAD OVER A HILL, with figures and animals

9 x 12

Agnew

## J. M. W. TURNER, R.A., 1814.

46

144 THE LAND'S END

5 x 7

*Engraved in the Southern Coast Series*

do

## D. COX.

30

145 LIVERPOOL PIER

7 x 10

## D. COX.

45-

146 INTERIOR OF A NUNNERY

7 x 9

## COPLEY FIELDING.

30

147 THE ENTRANCE TO DARTMOUTH HARBOUR

7 x 9

## J. M. W. TURNER, R.A.

75-

148 RYE

7 x 9

M<sup>o</sup> Leam

## D. COX.

38

149 A WAYSIDE COTTAGE, with figures

7 x 9

Shepherd

## S. AUSTIN.

15- 150 A FRENCH COAST SCENE, with boats and figures  
8 x 10

*Robinson*

## J. D. HARDING.

9 1/2 151 THE FISH MARKET, Naples  
7 x 9

*Lie C. Robertson*

## A. H. MARSH.

4 152 TWO PEASANT WOMEN, on the sands  
5 x 8

## D. COX.

0 153 HAYMAKING  
10 x 12

*Adams*

FINIS.

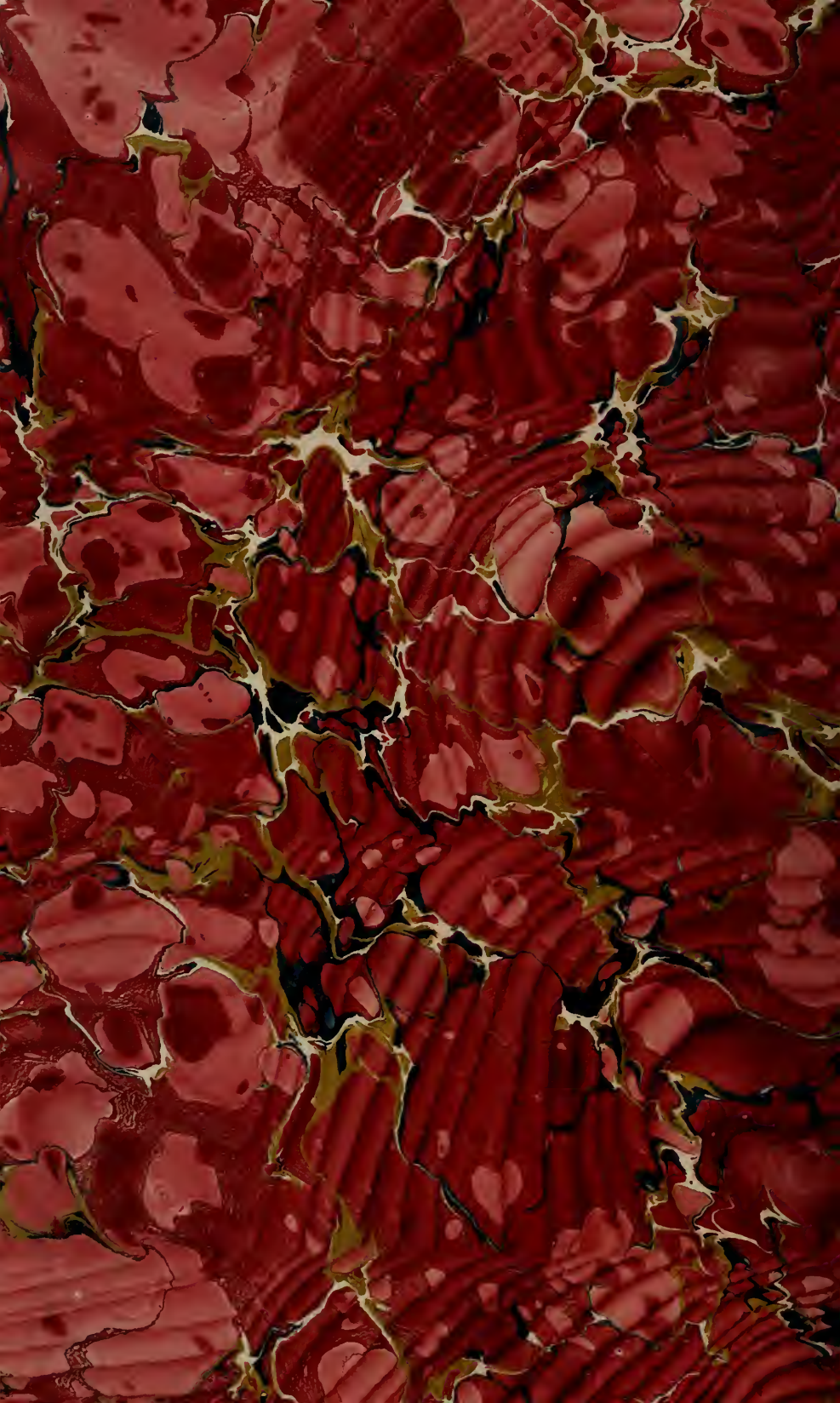






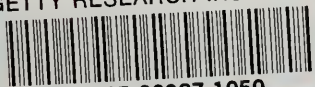






**LIBRARY**  
**GETTY CENTER**

GETTY RESEARCH INSTITUTE



3 3125 00987 1050

